

Product operating conditions

- Temperature range, °C -40...+40
- Humidity range, % 45...80

Manufacturer's warranty

The manufacturer provides its warranty for 12 months.

Warranty repair is not performed in case of:

1. End of the warranty period.
2. Failure of Synchro RGB due to improper connection.
3. Damages caused by ingress of moisture on the circuit board.
4. Exceeding the maximum electrical parameters.
5. Traces of mechanical interference.

Serial number _____

Date of production _____

Mark for commissining.

Date of sale _____

Stamp of trading organization.



MAKS BRIGHT

603000, 4A Nesterova str., Nizhny Novgorod, Russia

E-mail: denis@maksbright.com
info@maksbright.com
www.maksbright.com

MAKS BRIGHT

PROFESSIONAL LED SOLUTIONS

USER MANUAL

Sigma RGB Synchro

**RGB LED
CONTROLLER**

Made in Russia
www.maksbright.com

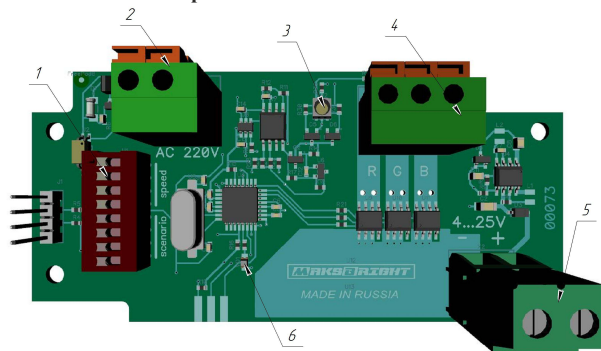
Brief description

Controller RGB Synchro is designed to control low-voltage lighting equipment. Controllers are synchronized using the 220V mains. The scope of application includes the decorative lighting, festive illumination, show-tech, and a wide range of features for a particular customer. The software and documentation are presented on www.maksbright.com.

Specifications

• Number of channels, pcs	3
• DC supply voltage, V	4...25
• Maximum permissible current per channel, A	8
• Total permissible current, A	24
• Short circuit protection	no
• Number of scripts	15
• Channels dimming frequency, Hz	250
• Playback speed control	yes
• Number of playback speeds	16
• Weight, not more than, g	330
• Dimensions, mm	115x65x40
• Protection class	IP 65

Description of controls and indications



1 - 1 to 4: script selection switch, 5 to 8: playback speed selection;
2 - connector for synchronization with the 220 V mains frequency;
3 - channel operation indicator;
4 - terminal for connecting LED lines;
5 - terminal for connecting the power supply unit;
6 - indication of the synchronization connector (if the LED blinks once per second, then the synchronization is effective, if it blinks 16 times per second, the synchronization is not effective).

Principle of RGB Synchro operation

RGB Synchro has predisposed working scripts to be selected by the user. The user can select the playback speed of the chosen script. For synchronous operation of several remote devices, such devices are to be connected to one 220V mains to be synchronized.

Procedure for synchronization of several devices

1. Select the same script for all devices.
2. Select the same script playback speed for all devices.
3. Connect all devices to one 220V mains. It is necessary for synchronous operation of all devices only. Please note that the devices are not powered through the synchronization connector and a separate power supply unit for their operation is required!

Wiring diagram RGB Synchro

